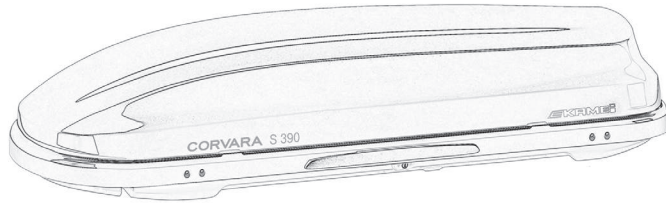


Gebrauchsanleitung Instructions for use Instructions d'utilisation



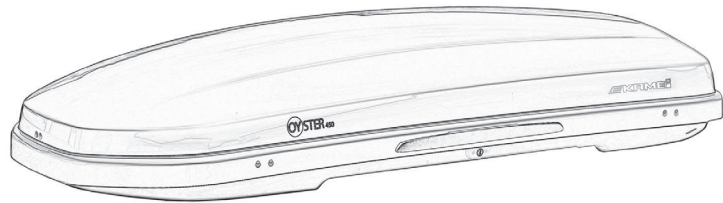
CORVARA S 390



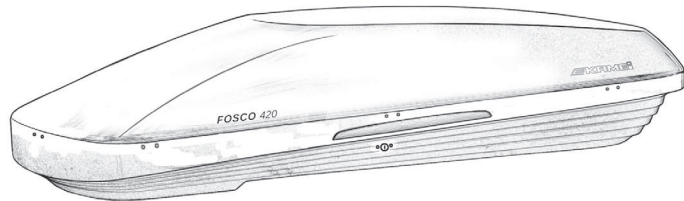
CORVARA S 475



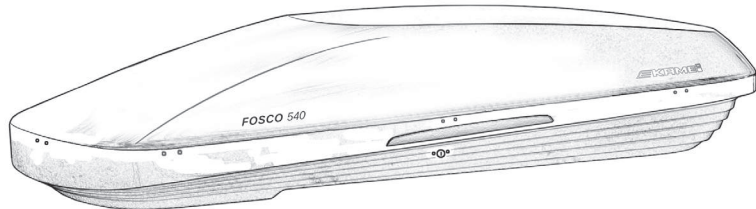
OYSTER 450



FOSCO 420



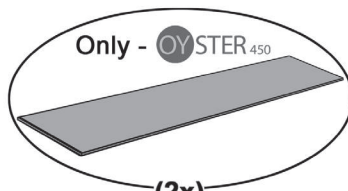
FOSCO 540



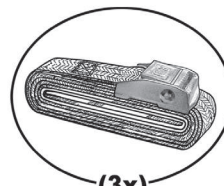
(1x)



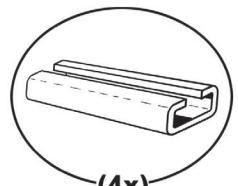
(2x)



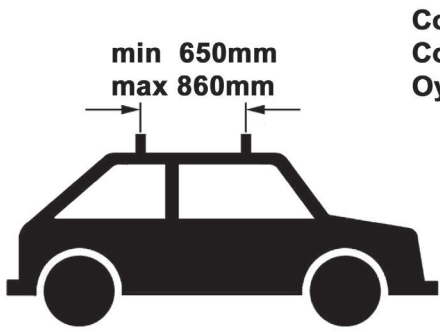
(2x)



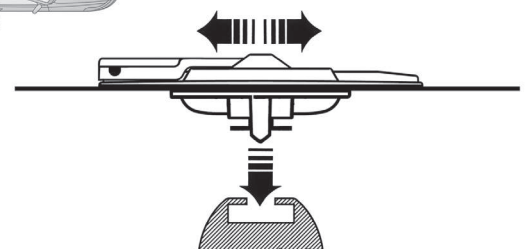
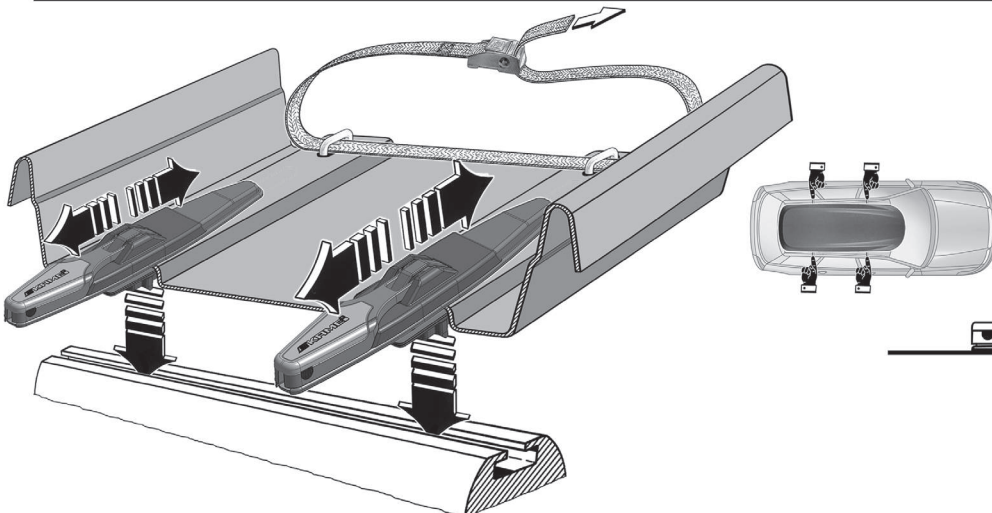
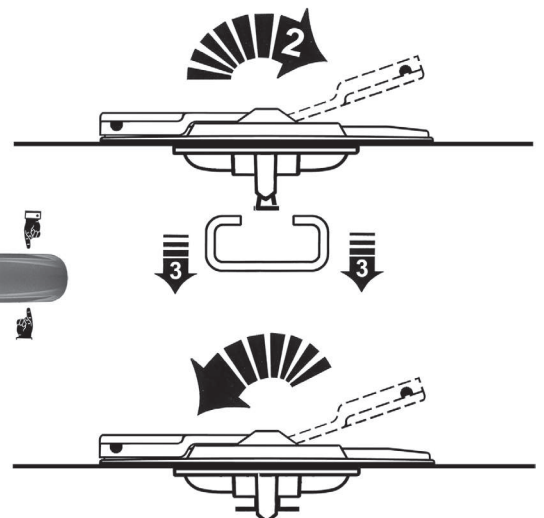
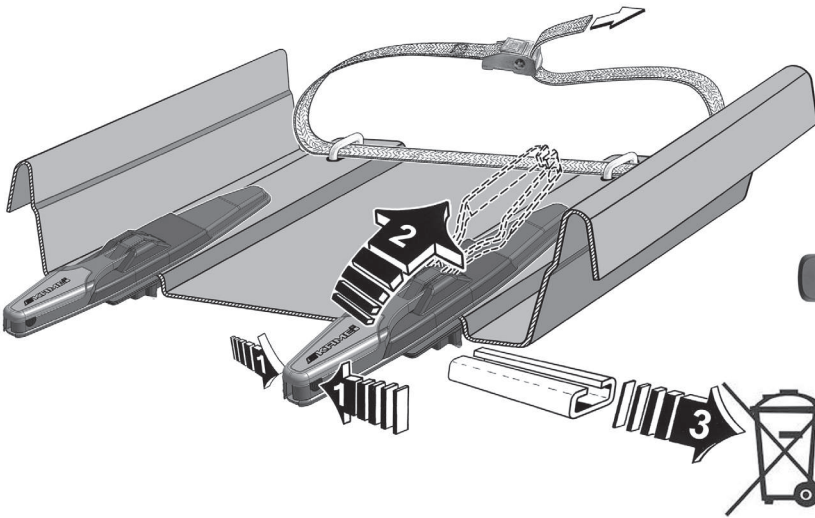
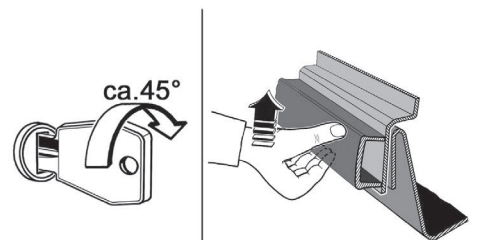
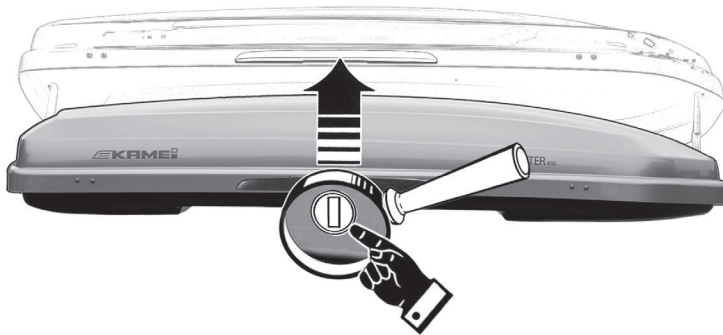
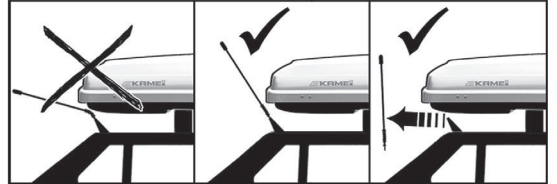
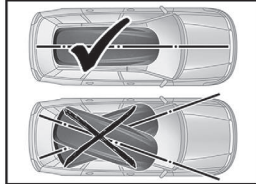
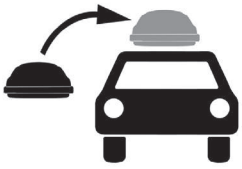
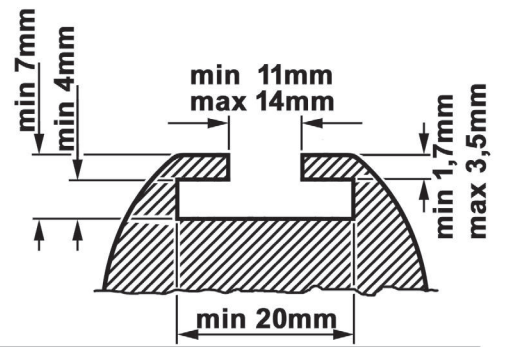
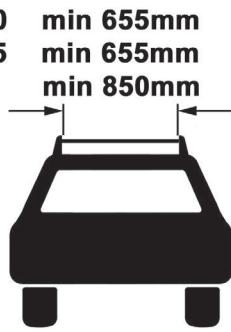
(3x)

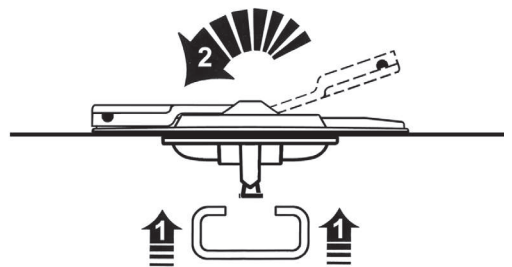
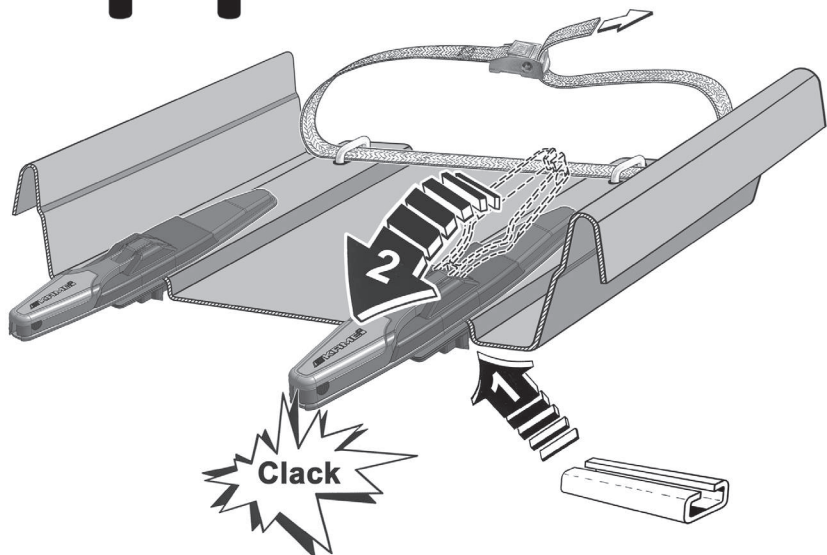
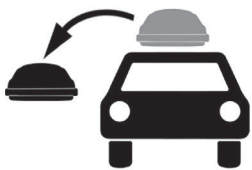
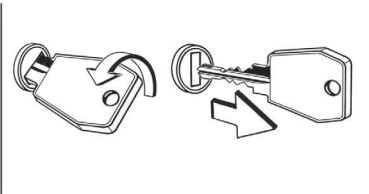
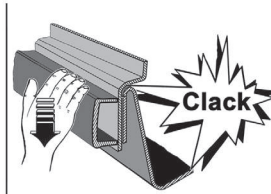
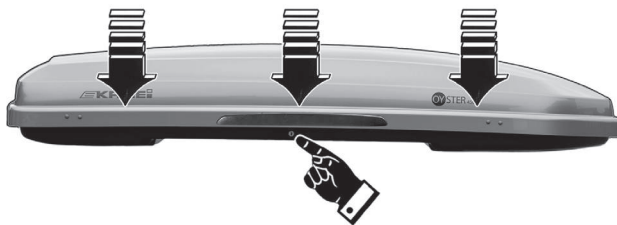
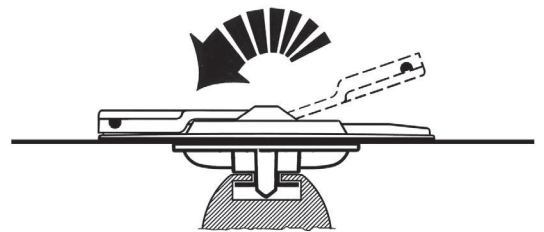
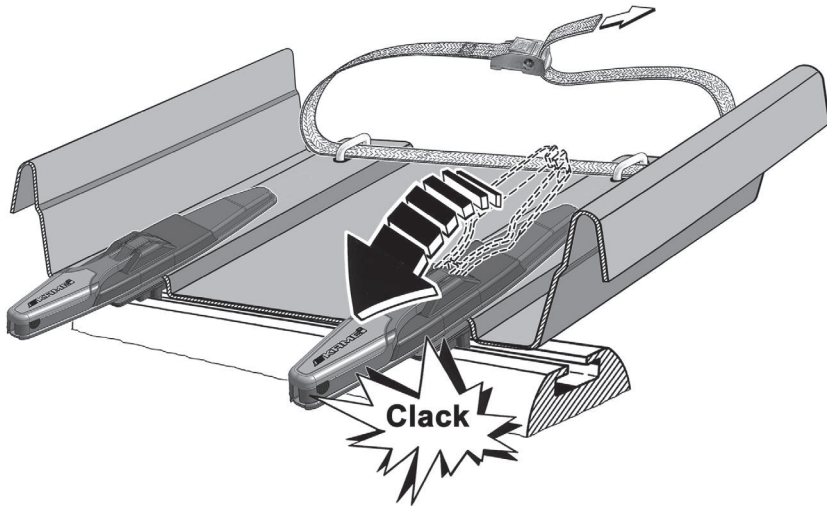
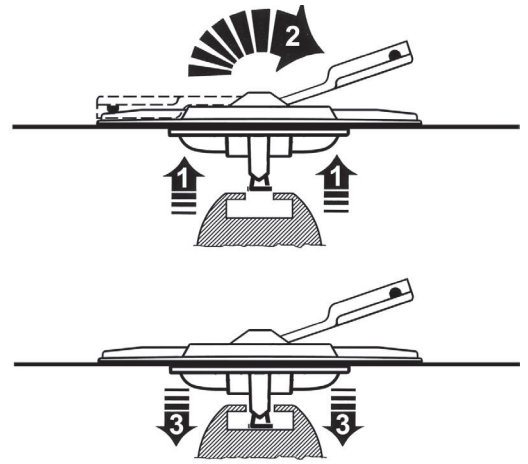
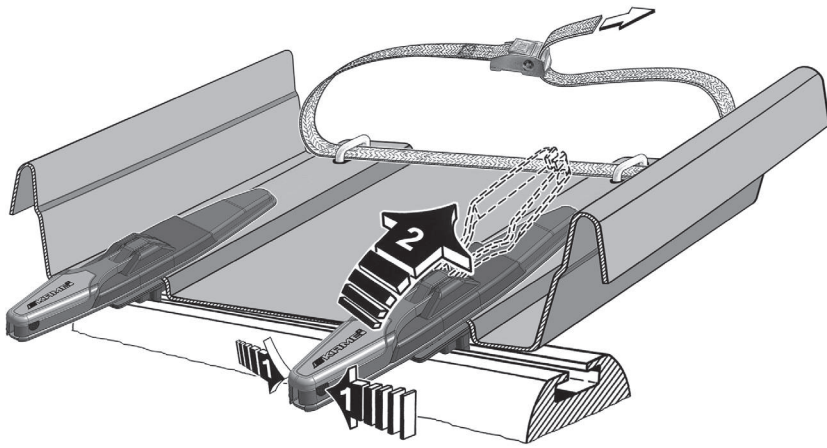


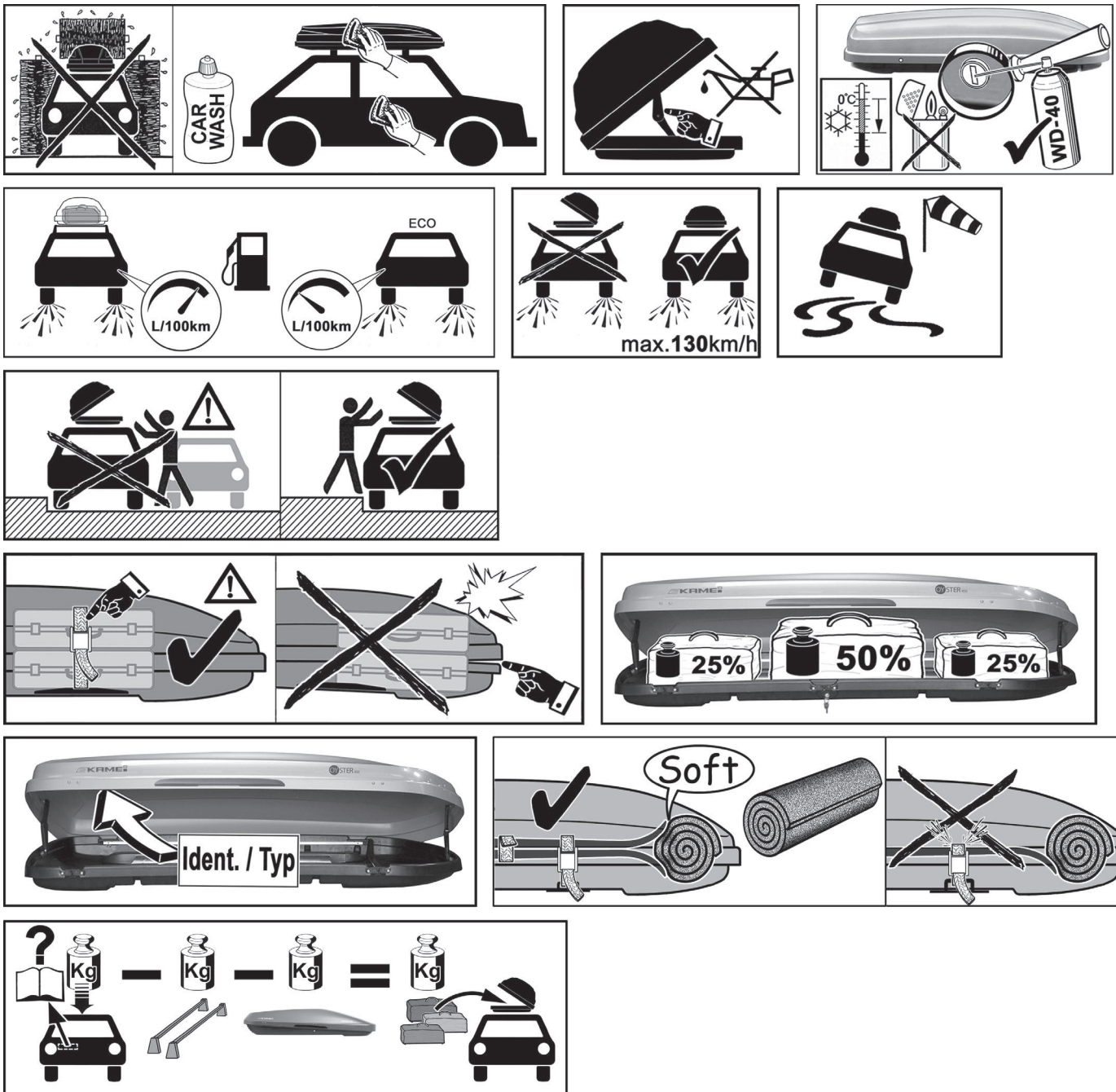
(4x)



Corvara S 390
Corvara S 475
Oyster 450







Dachcontainer Typ 81200

Haupt-Verkaufsbezeichnung Auch andere Verkaufsbezeichnungen sind genehmigt	Maße			Volumen Schüttgut Liter	Gewichte		
	Länge cm	Breite cm	Höhe cm		Eigengewicht kg	zulässige Tragfähigkeit kg	Maximalgewicht beladen kg
CORVARA S 390	190	75	43	390	16	75	91
CORVARA S 475	230	75	41	475	19	75	94
OYSTER 450	206	95	36	450	22	75	97
FOSCO 420	195	80	40	-----	18	75	93
FOSCO 540	216	94	44	-----	22	75	97

Hersteller: KAMEI GmbH & Co. KG Heinrichswinkel 2 D-38448 Wolfsburg
www.kamei.de